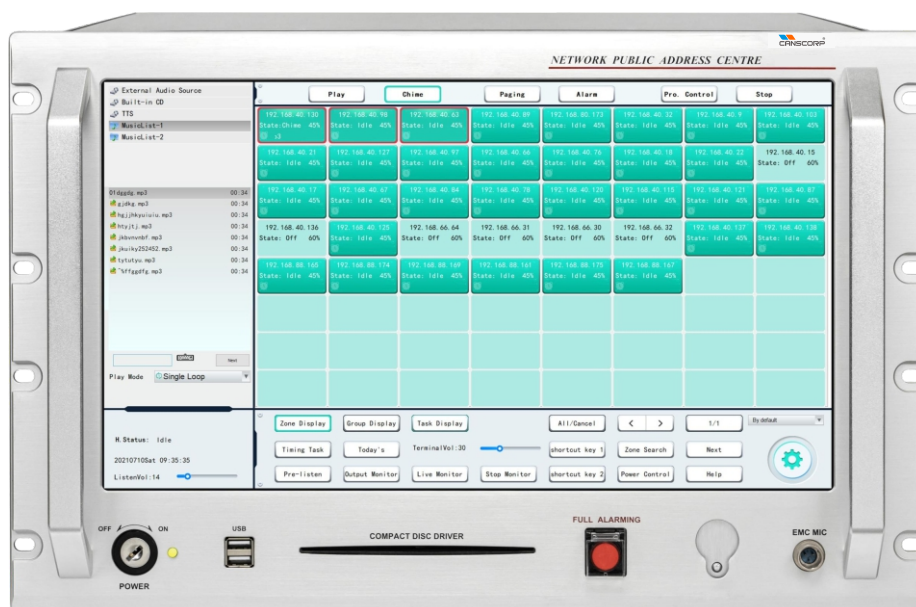


CNS9200 NETWORK PUBLIC ADDRESS CENTER

TECHNICAL DATA SHEET



DESCRIPTION:

The network public address center CNS9200 is compatible with terminals with various functions, including player terminals, VOD terminals, paging terminals and one-button emergency calling terminals etc. The device is composed of a player, a zoning mechanism, a timer and an equalizer, in addition it also provides powerful audio matrix function.

The network public address system is applicable to airports, wharves, college towns, schools, large gatherings (such as the Expo Park), gymnasium, industrial parks, parks, rail transit and express ways, etc.



FEATURES:

- With two servers and two databases, one master host and one backup unit, real-time synchronization, for dual-system hot backup function.
- 17.3" large color screen, with touch screen control.
- Using a key switch for a safer and more stable system.
- With powerful broadcast matrix, and built-in large-capacity program source capacity, can customize program sources as needed.
- With one-key alarm trigger for all zones and manual alarm functions.
- With TTS Chinese and English text broadcast function;
- With zone monitoring function to monitor the playback status and volume of zone terminals in real time.
- With zone paging function to directly page the zone on the host.
- Can add and display the new zone automatically, no need to set and restart the host.
- With auto on/off function, easy to use; with automatic screen saver function, energy-saving.

- With recording function. Can make your own program sources, which can be recorded by this machine, or copied from the remote control computer.
- With timing control function. Can edit the timing point on this machine, or download the timing point from the computer to the machine for execution.
- Equipped with a built-in CD player, with self-made CD player control interface.
- Can use the network paging terminal to expand the audio input channel.
- Adopt modular design, and can install network expansion modules, with more flexible function customization and easier maintenance.
- Adopt double solid-state hard disk design, with faster startup speed, better earthquake resistance and system stability.
- Adopt high-end industrial server motherboard design, dual network redundant backup.
- Can customize the bulk processing function of the <shortcut key> and customize the priority of the program audio source.
- Support Pinyin, five-stroke, stroke input method and so on.
- Support video terminals management, can video intercom, video monitoring, multi-screen display function, and display multi-screen images through the extended display screen.
- Support the binding of broadcast terminal with IPC.
- Support H264 video format.
- With offline functions of network microphone and network terminal.
- Support the access of intercom system.
- Support electronic map interactive management, and can customize the electronic map of the zone, with the electronic map status and operation functions.

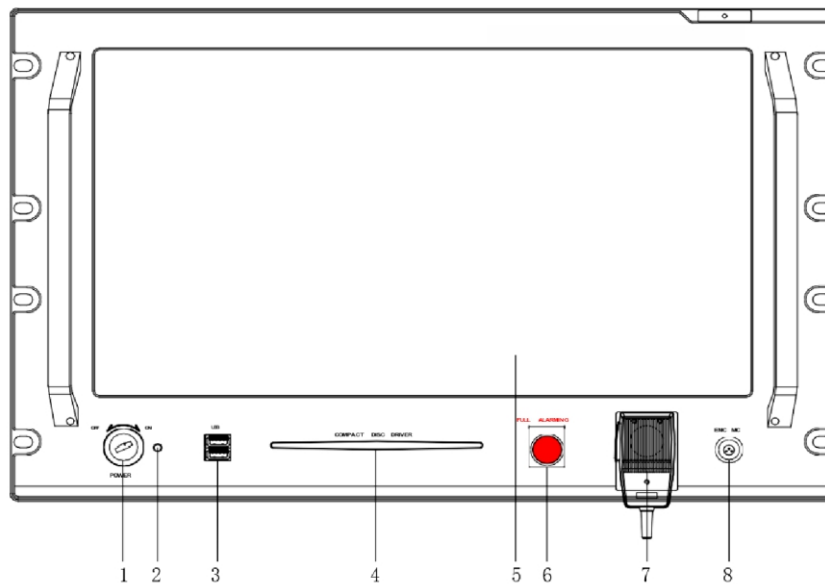


- Support network radio playback and wireless push.
- Can remote control our company’s PC10 peripheral equipment.
- Mixing output is possible by connecting to a broadcast terminal with mixing function.
- Supports linkage with mainstream cameras such as Hikvision and Dahua to achieve AI broadcast functions such as event triggering and event broadcasting.

SPECIFICATIONS:

Model	CNS9200
Computer System	WIN7 and above
CPU	Intel(R) Core(TM)I7-7600U
Memory	8G DDR4
Hard Disk Capacity	250G M.2 SSD +512G 2.5-inch SSD
Audio Playback Format	MP3
Play Stream	120k-320K
Operating System	32/64 bits
Number of Terminals Supported by Network	Less than 110 unicast, unlimited multicast
Screen Size	17.3" LCD screen
Control Method	Touch screen
Timing Power Load Capacity	Single channel current: 2A
System Audio Signal SNR	LINE: >70dB;MIC: >60dB
System Audio Signal Distortion	1kHz<0.5%
System Audio Signal Standard Input Level	LINE: 300mV±20mV;MIC: 10mV±2mV.
System Audio Signal Standard Output Level	0dBV
Power Output Method	Constant resistance output
Undistorted Output Power	10W
Power Consumption	AC 220V/50Hz/150W
Package Dimensions (L×W×H mm)	535×360×540
Machine Dimensions (L×W×H mm)	483×308×445
Gross Weight	28.7kg
Net Weight	19.5kg
System Software	Network PA system software package. All rights reserved, no copying or counterfeiting is allowed.





1.Key Switch (POWER)

The key switch is the power switch of the machine. Use the professional key of the network public address system host to turn on the power clockwise, and turn off the power counterclockwise. Do not turn on and off frequently, and the interval time between on and off should be more than 15s.

2.POWER LED

When the power is turned on, the indicator light stays green.

3.USB Port (USB)

The USB port is used to connect a USB flash disk, mobile hard disk or other storage devices to copy programs for the system. You can also connect a keyboard or mouse with a USB port for software upgrades and other operations.

4.Slot-in CD Jack

Manually insert the CD halfway into the jack, and then it will be sucked in automatically. You can use the “Eject” function on the software interface to eject the CD with one click.

5.Display Scree

The color display/touch screen can display various information of the machine in real time; and you can directly touch the screen to operate the function items.

6.One-key Alarm Trigger Button (FULL ALARMING)

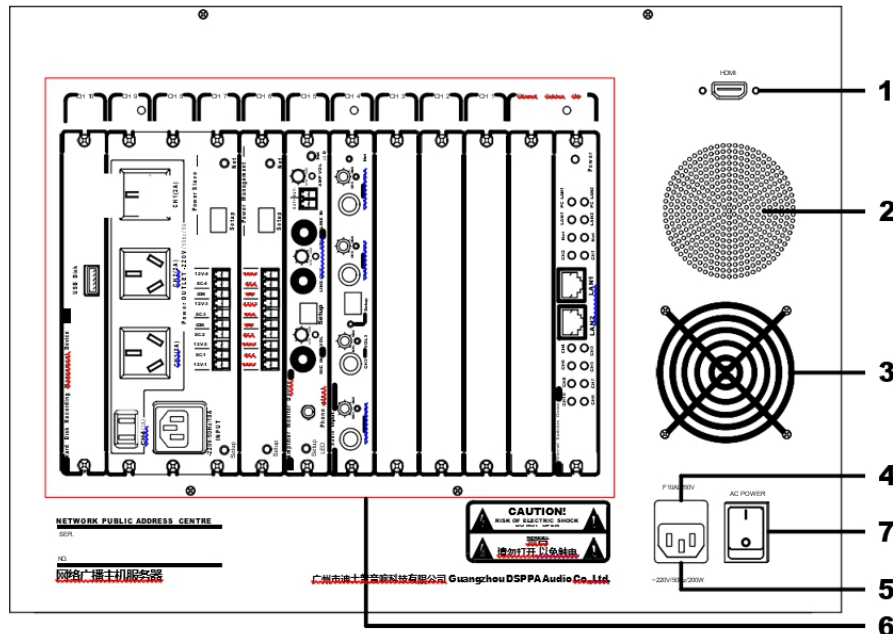
The signal sent by the button has the second priority, which is second only to the emergency paging microphone (7). As an emergency alarm trigger button, when an emergency occurs, all zones will be automatically opened after pressing this button, and an alarm signal will be sent to all zones. In the alarm state, the button lights up in red. At this time, press the button again to end the alarm.

7.Hand-held Emergency Paging Microphone Holder

When the emergency paging microphone is not in use, hang the microphone here.

8.Handheld Emergency Paging Microphone Jack (EMC MIC)

The hand-held emergency paging microphone has the highest priority. When the microphone talk switch is pressed, all zones are automatically opened, and all other signals are in waiting state. (For the operation of emergency paging microphone CB-100, please refer to its user manual, which will not be repeated here.)



1.Data Exchange Interface (HDMI)

Connect the function module expansion box.

Note: This interface can also be designed as a VGA interface to connect external displays, please confirm the interface before confirming the order.

2.Speaker

3.Cooling Vent

When placing the machine, do not lean against the wall, and do not block the cooling vent.

4.Power Fuse Holder

If the fuse is blown, please replace it with a fuse of the same specification. For the specification of the fuse, please refer to the label next to the blown fuse or the product performance index specification table; if the fuse continues to blow, there is a short-circuit fault inside the machine. Please remove the fault and replace the fuse.

5.Power Input Plug

The power supply of this machine is AC220V (±10%). Please make sure that the voltage value of the power input to the machine matches that of the machine.

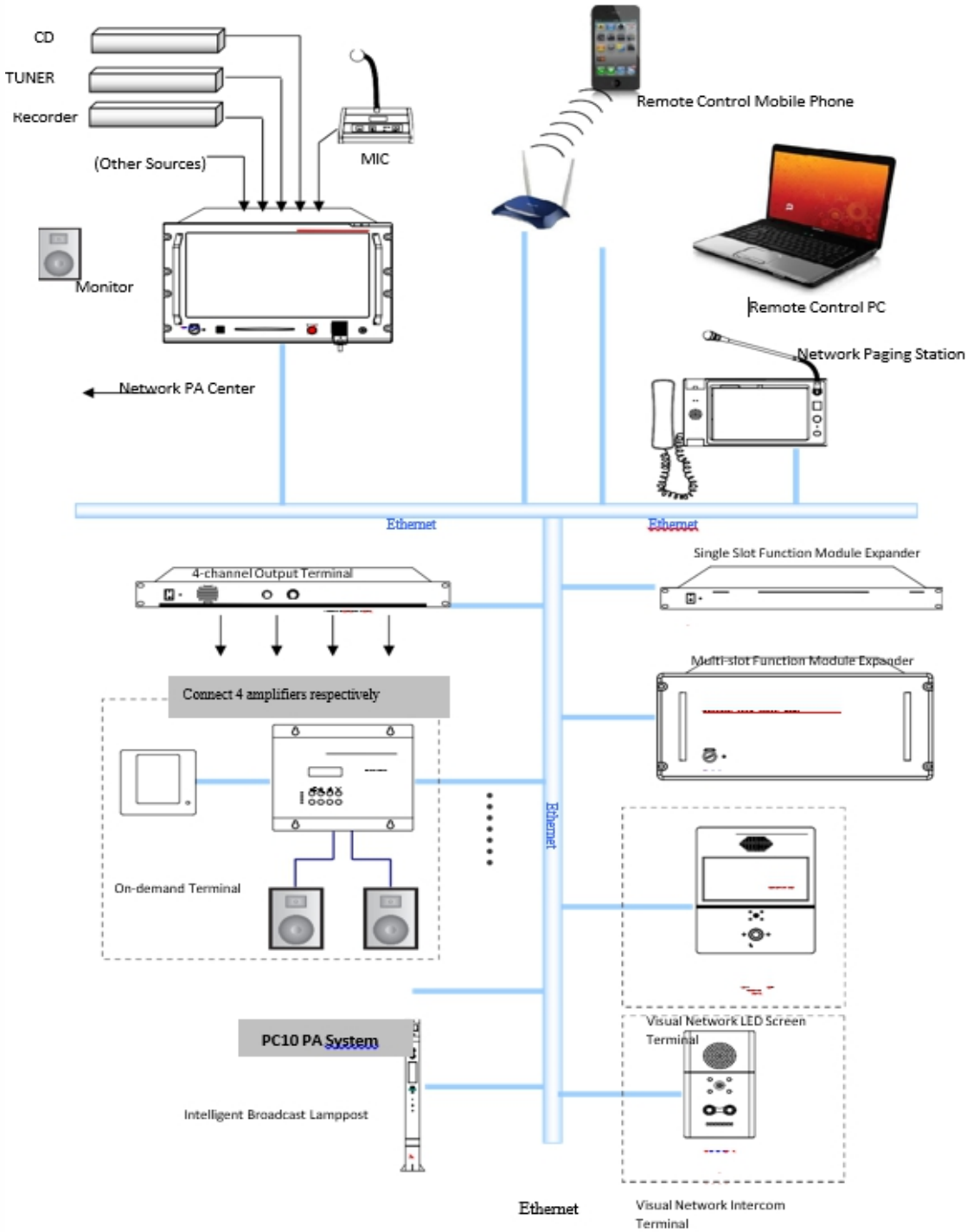
6.Function Module Expansion Port (Note: This machine needs to be equipped with 6 standard expansion modules to work normally!)

The 6 standard expansion modules include a switch module, 4-channel audio collection module, a monitoring module, a hard disk module, and a power supply main/standby expansion modules. The user can expand other required modules according to their needs.

7.Power Switch



SYSTEM DIAGRAM



Email: Sales@canscorp.com

Add.: Shop No 5-6, Adinath Alpine building, Plot No. 28 A, Sector 25, Khandeshwar, Navi Mumbai, Maharashtra 410209

Web.: WWW.CANSCORP.COM

