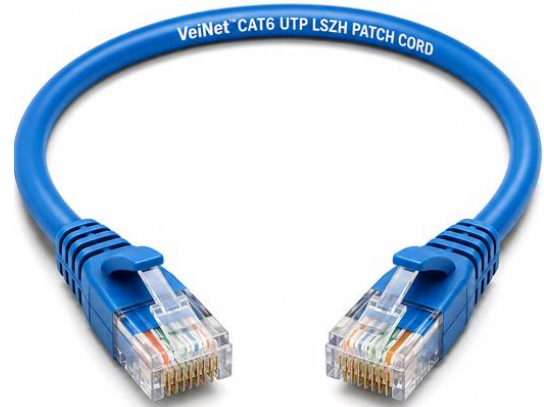




## CAT6 UTP LSZH PATCH CORD



### CAT6 UTP LSZH PATCH CORD

#### Product Description

- High quality four-pair twisted stranded cable
- Terminated with RJ45 modular plugs at both ends
- Complies with TIA/EIA-568-C.2 standard
- Suitable for high-speed data transmission

#### APPLICATIONS

- 10BASE-T
- 100BASE-TX Fast Ethernet
- 1000BASE-T
- 10GBASE-T (IEEE802.3)
- 100VG-AnyLAN (IEEE802.12)
- 550MHz Broadband Video
- Voice, T1, ISDN
- 155/622 Mbps ATM
- Power over Ethernet (PoE)

#### ELECTRICAL / PERFORMANCE PROPERTIES

- Supports transmission frequencies up to 550 MHz
- Compatible with 10BASE-T, 100BASE-TX, 1000BASE-T, and 10GBASE-T networks
- Dielectric withstanding voltage: 500V AC
- Insulation resistance: 35M Ohm (max.)
- Supports Power over Ethernet (PoE) applications

#### TECHNICAL SPECIFICATIONS

- 24 AWG multi-stranded bare copper conductor for reliable high-speed data transmission
- LSZH outer jacket with HDPE insulation for enhanced safety and durability
- Supports 10/100/1000BASE-T and 10GBASE-T Ethernet applications
- RJ-45 gold-plated modular plugs with 750 insertion cycle durability
- Compliant with TIA/EIA-568-C.2 standard and supports PoE applications

#### PART NUMBERS

VNT-C6PPUGRL — Cat6 UTP 24AWG LSZH Patch Cord

#### Canscorp Engineers Private Limited

Specifications are subject to change without notice.  
Canscorp is a registered trademark of Canscorp Engineers Pvt Ltd  
All other trademarks belong to their respective owners.  
©2026 Canscorp Engineers Private Limited. All rights reserved.  
Release 01 (February 2026)